

Distributed By:



Cleveland 1-800-362-9267
Canton 1-877-258-7601
Toledo 1-800-860-3352
www.chasehipps.com

MASTER[®]
» BUILDERS
SOLUTIONS



MasterProtect[®] Wall Coatings

Color and Texture Portfolio

 **BASF**
We create chemistry



BASF connects the Master Builders Solutions brand to the construction industry through over 1,000 dedicated and talented individuals in North America.



MasterProtect® Color Portfolio



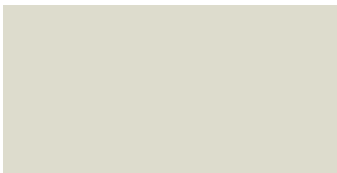
Stark White 9152-P



China White 9151-P



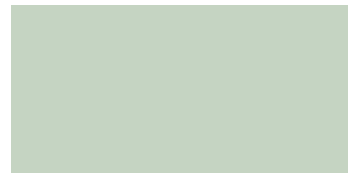
Blue Ice 9128-P



Alpine White 9100-P



Morning Shadow 9175-P



Early Spring 9115-P



Silver Fox 9240-M



Winter Gray 9241-M



Morning Sky 9227-M



Dusty Green 9214-M



Nickel 9239-M



Early Dawn 9276-M



Denim 9458-N



Moss Green 9412-N



Shale 9438-N

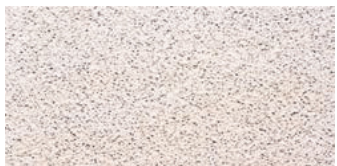


Ivy Green 9465-N

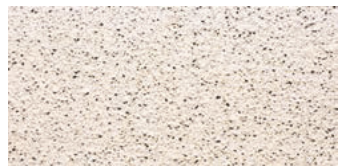
Texture Portfolio



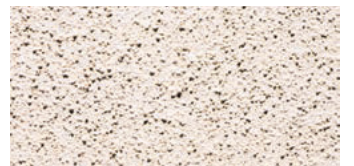
MasterProtect HB 400 Smooth



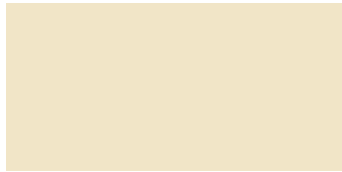
MasterProtect HB 400 Fine



MasterProtect HB 400 Coarse

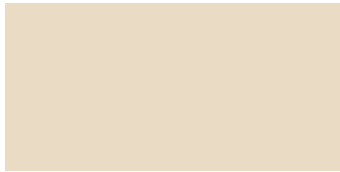


MasterProtect HB 100 TW



Serenity White

9173-P



Sesame

9172-P



Winter Grass

9106-P



Stonewash

9170-P



Pearl Gray

9274-M



Parchment

9119-P



Sandy Beach

9237-M



Thoro® Gray

9247-M



Apache

9232-M



Putty Tan

9233-M



Stone Creek

9264-M



French Vanilla

9218-M



Antique Lace

9216-M



Prairie Dusk

9242-M



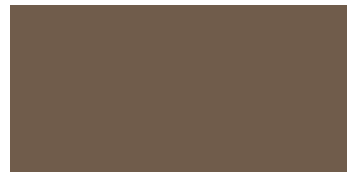
Light Khaki

9211-M



Dijon

9217-M



Dark Almond

9463-N

Textures

Master Builders Solutions offers a range of textures to enhance the appearance of your facade, and to cover surface imperfections.



Whip Cream

9169-P



Soft Rose

9171-P



Cherry Cream

9123-P



Summer White

9101-P



Navajo White

9102-P



Pink Coral

9146-P



Shell

9262-M



Tudor Beige

9236-M



Dusty Peach

9255-M



Blush

9222-M



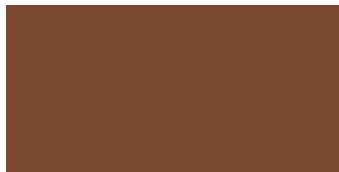
Mayan

9235-M



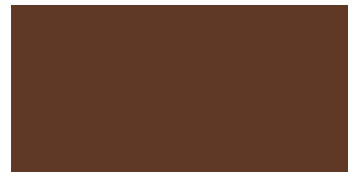
Adobe

9444-N



Brick Stone

9467-N



Mocha

9434-N



Good Earth

9430-N



Brandywine

9442-N



Walnut

9429-N



Colors

Color formulas of the 50 MasterProtect colors are available through the MasterProtect tint manual, in both print and electronic format. Custom colors and color formulas are available upon request to Customer Service.

NOTE: Colors above serve only as a visual guide for initial selection of color. It is important to note that the colors seen will vary depending on your monitor settings, as well as by the specific settings for your color printer, should you print the results of your search. See your BASF distributor for actual color samples.

Master Builders Solutions from BASF

The Master Builders Solutions brand brings all of BASF's expertise together to create chemical solutions for new construction, maintenance, repair and renovation of structures. Master Builders Solutions is built on the experience gained from more than a century in the construction industry.

The know-how and experience of a global community of BASF construction experts form the core of Master Builders Solutions. We combine the right elements from our portfolio to solve your specific construction challenges. We collaborate across areas

of expertise and regions and draw on the experience gained from countless construction projects worldwide. We leverage global BASF technologies, as well as our in-depth knowledge of local building needs, to develop innovations that help make you more successful and drive sustainable construction. The comprehensive portfolio under the Master Builders Solutions brand encompasses concrete admixtures, cement additives, chemical solutions for underground construction, waterproofing solutions, sealants, concrete repair and protection solutions, performance grouts performance flooring solutions.

Master Builders Solutions products from BASF for the Construction Industry:

MasterAir®

Solutions for air-entrained concrete

MasterBrace®

Solutions for concrete strengthening

MasterCast®

Solutions for manufactured concrete product industry

MasterCem®

Solutions for cement manufacture

MasterEmaco®

Solutions for concrete repair

MasterFinish®

Solutions for formwork treatment

MasterFlow®

Solutions for precision grouting

MasterFiber®

Comprehensive solutions for fiber reinforced concrete

MasterGlenium®

Solutions for high-performance concrete

MasterInject®

Solutions for concrete injection

MasterKure®

Solutions for concrete curing

MasterLife®

Solutions for enhanced durability

MasterMatrix®

Advanced rheology control solutions for self-consolidating concrete

MasterPel®

Solutions for water tight concrete

MasterPolyheed®

Solutions for high-performance concrete

MasterPozzolith®

Solutions for water-reduced concrete

MasterProtect®

Solutions for concrete protection

MasterRheobuild®

Solutions for super-plasticized concrete

MasterRoc®

Solutions for underground construction

MasterSeal®

Solutions for waterproofing and sealing

MasterSet®

Solutions for retardation control

MasterSure®

Solutions for workability control

MasterTop®

Solutions for industrial and commercial floors

Ucrete®

Flooring solutions for harsh environments

BASF Corporation Construction Systems

889 Valley Park Drive
Shakopee, MN 55379 USA

Customer Service 1(800)433-9517

Technical Service 1(800)243-6739

master-builders-solutions.basf.us



® = Registered trademark of the BASF-Group in many countries.
© 2015 BASF Corporation 1019055 rev 03/2015

LIMITED WARRANTY NOTICE: BASF warrants this product to be free from manufacturing defects and to meet the technical properties on the current Technical Data Guide, if used as directed within shelf life. Satisfactory results depend not only on quality products but also upon many factors beyond our control. BASF MAKES NO OTHER WARRANTY OR GUARANTEE, EXPRESS OR IMPLIED, INCLUDING WARRANTIES OF MERCHANTABILITY OR FITNESS FOR A PARTICULAR PURPOSE WITH RESPECT TO ITS PRODUCTS. The sole and exclusive remedy of Purchaser for any claim concerning this product, including but not limited to, claims alleging breach of warranty, negligence, strict liability or otherwise, is shipment to purchaser of product equal to the amount of product that fails to meet this warranty or refund of the original purchase price of product that fails to meet this warranty, at the sole option of BASF. Any claims concerning this product must be received in writing within one (1) year from the date of shipment and any claims not presented within that period are waived by Purchaser. BASF WILL NOT BE RESPONSIBLE FOR ANY SPECIAL, INCIDENTAL, CONSEQUENTIAL (INCLUDING LOST PROFITS) OR PUNITIVE DAMAGES OF ANY KIND.

Purchaser must determine the suitability of the products for the intended use and assumes all risks and liabilities in connection therewith. This information and all further technical advice are based on BASF's present knowledge and experience. However, BASF assumes no liability for providing such information and advice including the extent to which such information and advice may relate to existing third party intellectual property rights, especially patent rights, nor shall any legal relationship be created by or arise from the provision of such information and advice. BASF reserves the right to make any changes according to technological progress or further developments. The Purchaser of the Product(s) must test the product(s) for suitability for the intended application and purpose before proceeding with a full application of the product(s). Performance of the product described herein should be verified by testing and carried out by qualified experts.



Cleveland 1-800-362-9267
Canton 1-877-258-7601
Toledo 1-800-860-3352
www.chasehipps.com