

**BRICKFORM**

## Color Selection Guide



**Color Hardener  
Cem-Coat**

**Antique Release  
Overlay Liquid Colorant**

**Antique-It  
Tinta' Seal**



# Color Selection Guide

Distributed By:  
*The Chas. E.*  
**Phipps**  
*Company*  
*Products. Equipment. Rentals.*  
 866-946-6668  
[www.phipps.com](http://www.phipps.com)



660 Pool Blue\*



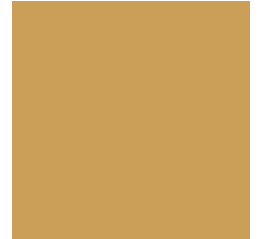
1025 Copper Brown\*



1060 Pecan\*



1085 Saddle Brown\*



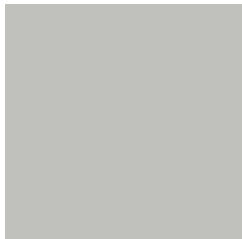
3100 Federal Yellow\*



250 Oyster White



300 Nutmeg



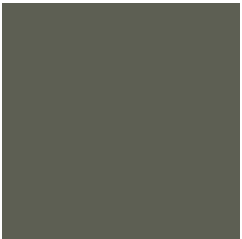
625 Dover Blue



100 Dark Gray



310 Cream Beige



815 French Gray



825 Slate Green



650 Smokey Blue\*



325 Sandstone



1050 Antique Cork



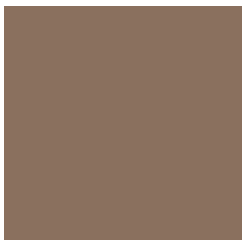
515 Sunbaked Clay



1055 Pecos Sand



1015 Blush Beige

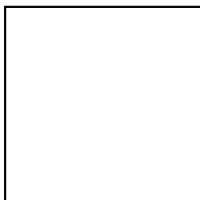
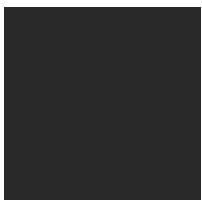


375 Buff Tan



525 Dusty Rose

Also available in: (All Products) 900-Black, 1000-White\*



\*BRICKFORM Overlay Liquid Colorant not available

## Color Hardener Cem-Coat

## Antique Release Overlay Liquid Colorant

## Antique-It Tinta' Seal



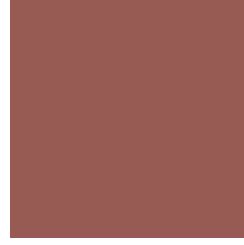
400 Chestnut



1020 Antique Rose



1035 Summer Beige



1065 Quarry Red



550 Brick Red



1030 Ash White



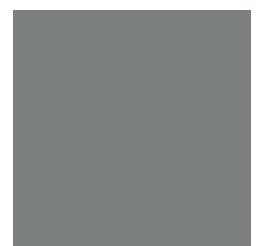
1090 Sun Buff



1010 Smokey Beige



615 Stone Gray



600 Light Gray



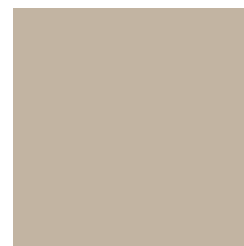
200 Medium Gray



735 Cappuccino



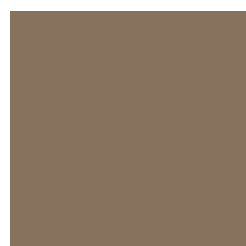
320 Golden Sandstone



1080 Adobe Buff



1070 Sandy Buff



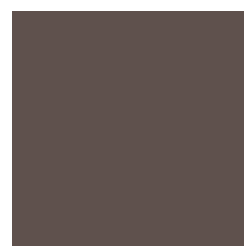
350 Desert Tan



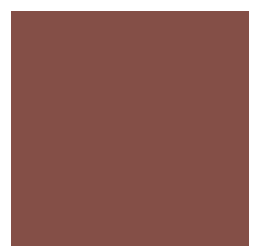
700 Terra Cotta



425 Autumn Brown



810 Walnut



500 Tile Red

[www.brickform.com](http://www.brickform.com)

The colors shown are representative and approximate, as closely as possible, concrete with a flat troweled finish, sealed with BRICKFORM Gem-Seal. BRICKFORM is not responsible for job conditions, application methods, finishing techniques, curing methods and other variables and cannot guarantee the final appearance to be an exact match. Texturing or finishing techniques such as brooming or troweling, the use of sealers, and slight color-drifts in raw materials will produce variations of the colors. BRICKFORM strongly recommends a representative job sample for each product.

**COLOR HARDENER** is an engineered blend, used to color the surface of new concrete. Color Hardener is manufactured with the finest UV-resistant pigments and premium aggregates available. Color Hardener is designed to work with imprinting tools to produce clear, sharp impressions that enhance the finished appearance of any new hardscape. When properly applied and worked into newly placed, fresh concrete, Color Hardener forms a colored concrete surface that is abrasion- and impact-resistant. Color Hardener is available in 42 standard colors and has a coverage rate of 90 to 120 ft<sup>2</sup> per 60 lb pail. Coverage rate will vary depending on timing, color and application technique.

**ANTIQUÉ RELEASE** is a hydrophobic colored powder that helps prevent Brickform imprinting tools from sticking during the stamping process. Antique Release is made from a finely ground formula that works with polyurethane texturing mats to create a beautifully antiqued and textured concrete surface. Antique Release forms a waterproof barrier that enables the stamping tool to be removed without concrete buildup on the stamp. During the stamping process, Antique Release is pressed into the concrete surface, creating a secondary coloring effect once washed off and sealed. Antique Release is available in 42 standard colors and has a coverage rate of 750-900 ft<sup>2</sup> per 30 lb pail depending on application.

**ANTIQUÉ-IT** is a water-soluble antiquing agent designed to impart a secondary color or highlight to hardened stamped concrete or textured overlays. Antique-It is easy to apply, dries fast, and provides a durable color that closely resembles the look of antiquing release powder. Antique-It is available in 42 standard colors. Coverage Rate: 1600-2000 ft<sup>2</sup> per 3 lb. container.

**CEM-COAT** is an opaque, high-strength, UV resistant, cement-based concrete coating. Cem-Coat is perfect for any unsealed concrete surface that needs to be re-colored. Cem-Coat offers a re-surfacing solution that is durable with consistent coloring. Whether a solid color, antiqued, or an artistic stained surface, Cem-Coat offers versatility in applications and final outcomes. Coverage Rate: 350 to 420 ft<sup>2</sup> per kit.

**OVERLAY LIQUID COLORANT** is an engineered blend of color admixtures designed for Brickform Stampable Overlay, Micro-Topping and SM Professional Grade product lines. Overlay Liquid Colorant is UV resistant and manufactured to strict standards to ensure color uniformity and consistency. Overlay Liquid Colorants are non-hazardous water-based formulations, providing easy clean up and no-hassle shipping. Overlay Liquid Colorant is available in 15 stocking colors (see highlighted box on color card) and 20 special order colors. See Brickform Standard Color Selection Guide for complete list of colors. Overlay Liquid Colorants come in cases of 6 – 10 ounce bottles. Coverage Rate is one 10 oz bottle per bag of overlay.

**TINTA' SEAL** tint packs are solvent based pigments made to color designated Brickform solvent-based sealers. Tinta' Seal can enhance and correct the color of existing cementitious surfaces such as integrally colored concrete, stamped concrete, overlays, or plain concrete. Tinta' Seal tint packs are designed to be used with most Brickform solvent-based sealers, including Gem Cure & Seal. Tinta' Seal is packaged in 16 oz bottles that is mixed onsite with a 5-gallon pail of Brickform solvent-based sealer. Coverage Rate: 16 oz bottle per 5 gal sealer.

---

**WARRANTY** • These products are not intended for public use and are intended for use by licensed contractors and installers, experienced and trained in the use of these products. They are warranted to be of uniform quality, within manufacturing tolerances. The manufacturer has no control over the use of these products, therefore, no warranty, expressed or implied, is or can be made either as to the affects or results of such use. In any case, the manufacturer's obligations shall be limited to refunding the purchase price or replacing material proven to be defective. The end user shall be responsible for determining product's suitability and assumes all risks and liability. **CAUTIONS** • KEEP OUT OF REACH OF CHILDREN. Before using or handling, read the appropriate Technical Data Sheet, Safety Data Sheet and Warranty. **DO NOT TAKE INTERNALLY.** Avoid contact with skin and eyes. Use only with a NIOSH approved respirator when using these products. Installation guidelines available at [www.brickform.com](http://www.brickform.com).

---

*Brickform Color Hardener, Antique Release, Antique-It and Cem-Coat are available in 42 standard colors. Brickform Overlay Liquid Colorant available in 15 stocked (see box) and 20 special order colors. This color chart is a representation only and does not guarantee that the final color will be an exact match. Texturing or finishing techniques such as brooming or troweling, the use of sealers, and slight color drifts in raw materials will produce variations of the colors. Brickform strongly recommends a representative job sample for each product.*

**BRICKFORM®**, A Division of Solomon Colors, Inc.  
4050 Color Plant Road, Springfield, IL 62702  
Customer Service: 800-483-9628  
[www.brickform.com](http://www.brickform.com)  
**An Employee-Owned Company • Made in USA**

Distributed by: